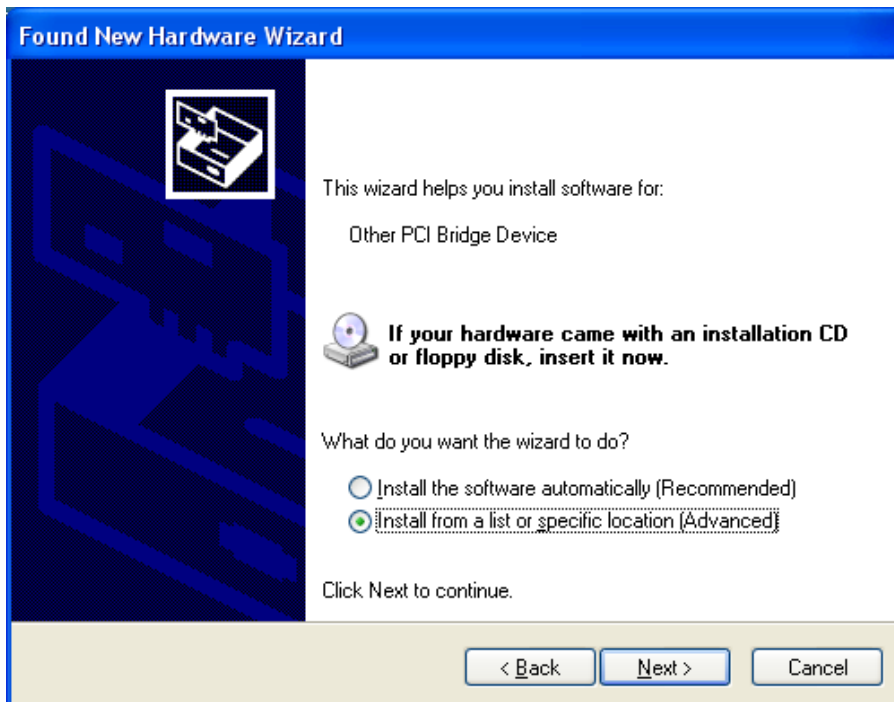


## DLPCI Windows XP 32 bit driver installation

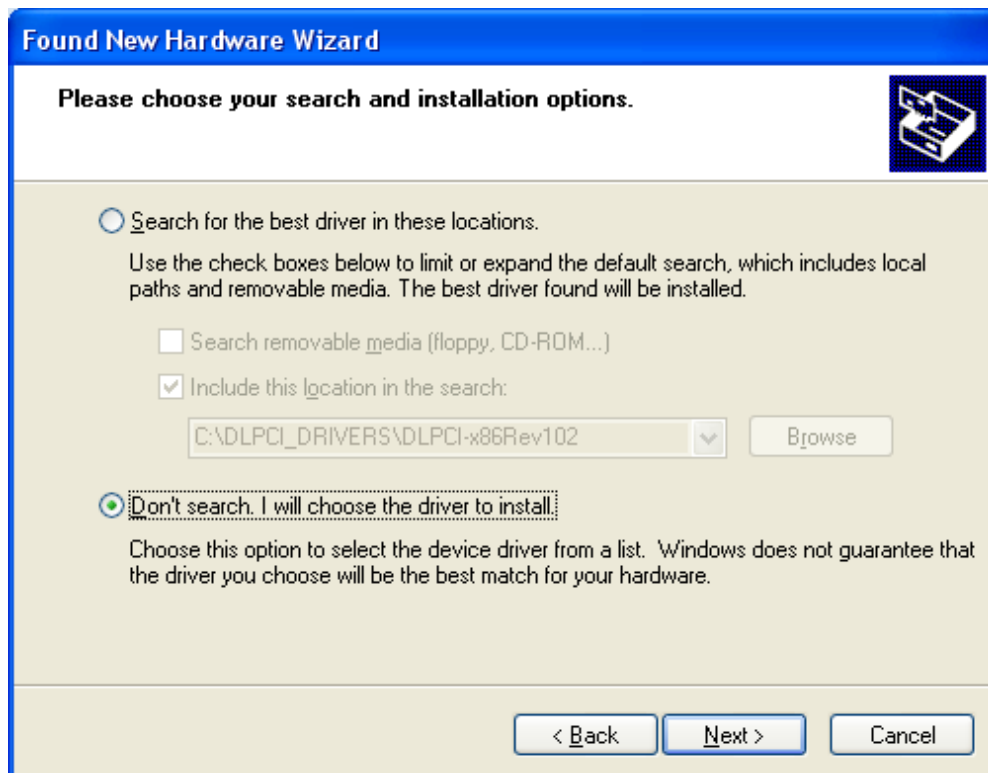
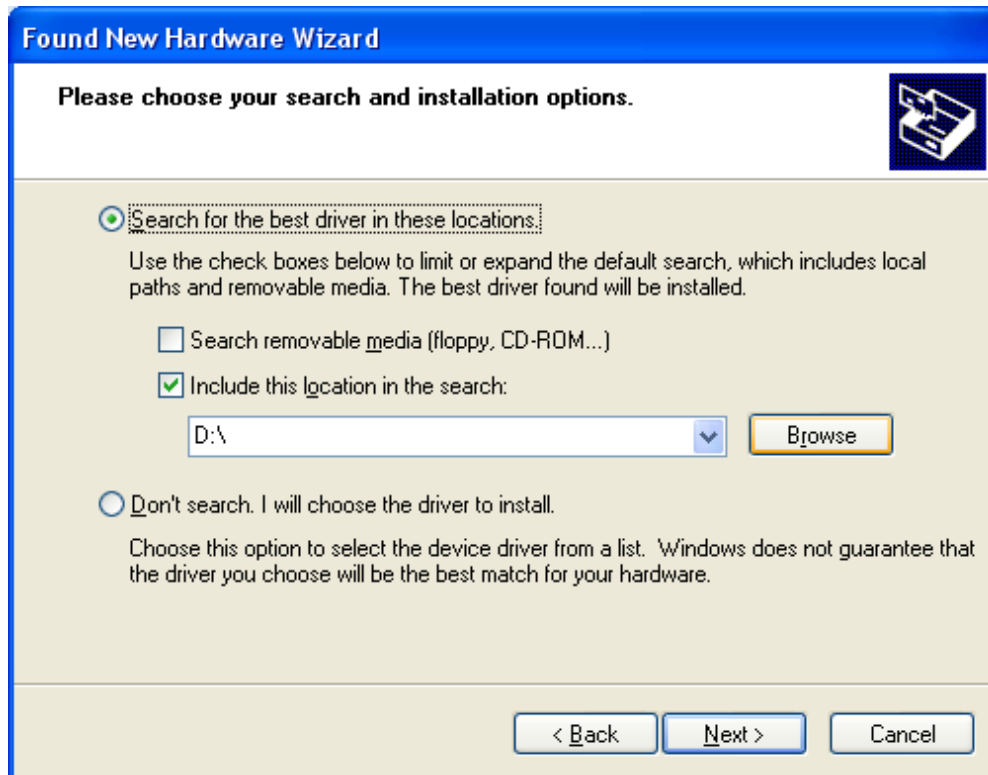
After installing the card in any PCI bus when you power up the PC it will come up with Found new hardware wizard as shown, select No, not this time as shown.



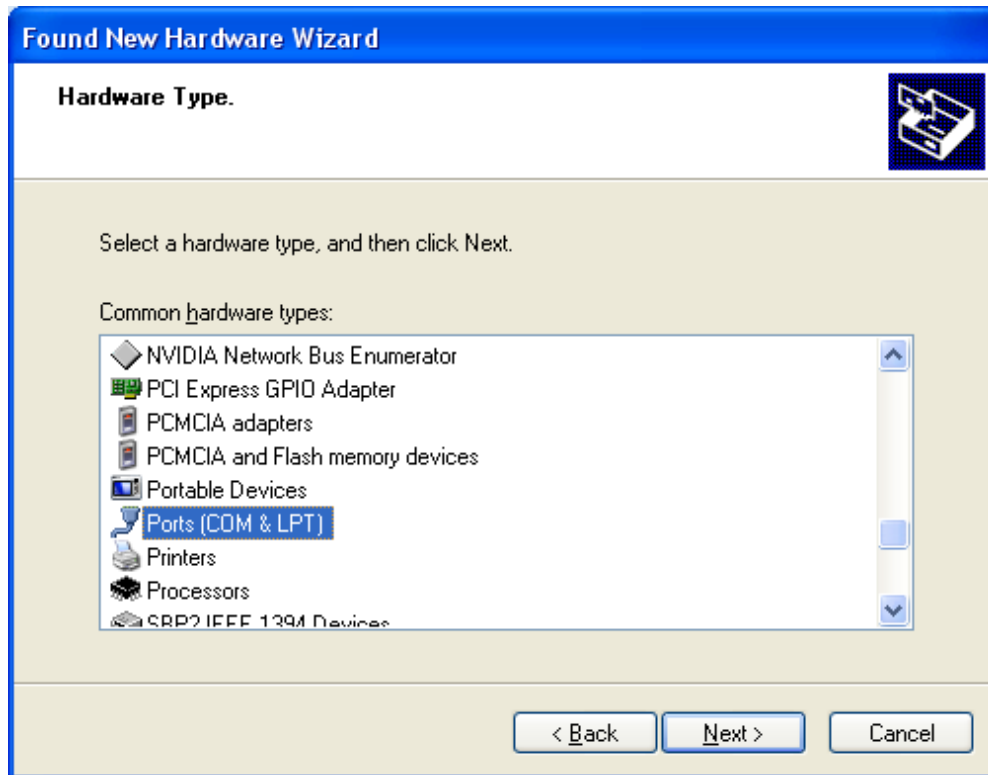
Then select Install from a list or specific location.



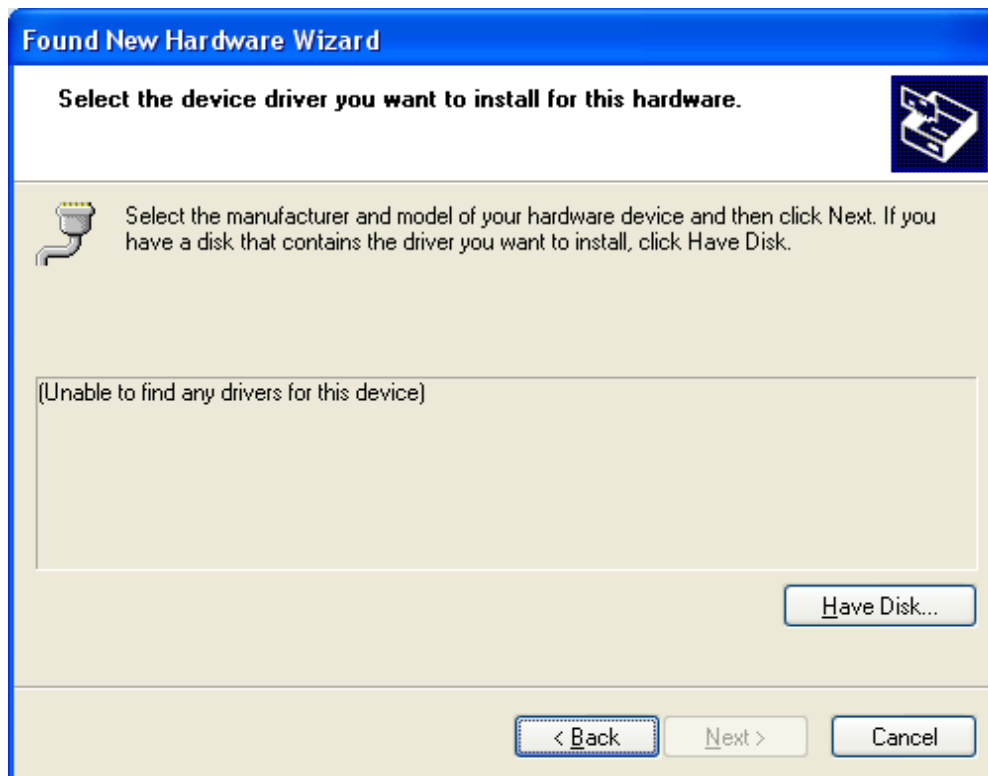
Select Don't search, I will choose the driver to install.



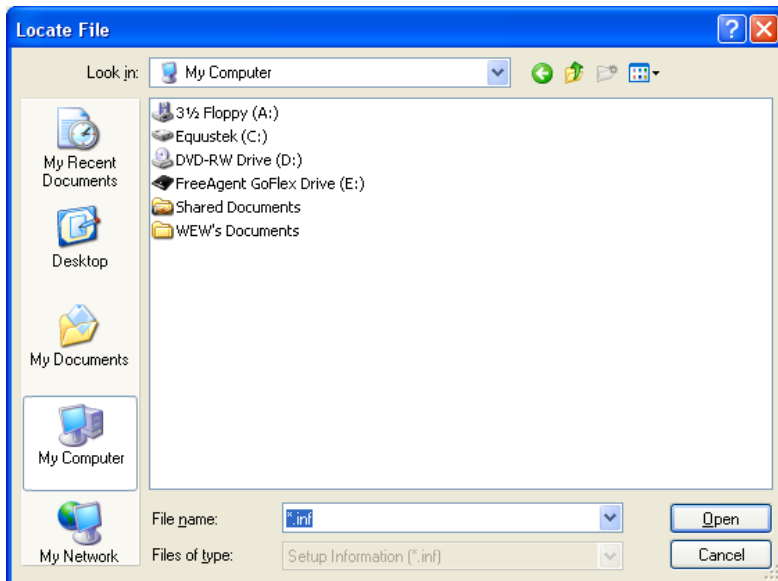
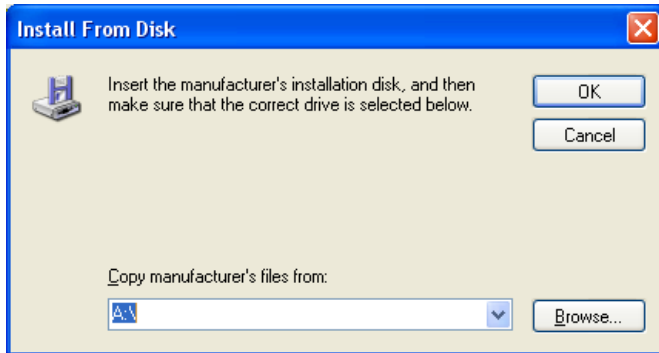
Select Ports(COM & LPT) as shown below.



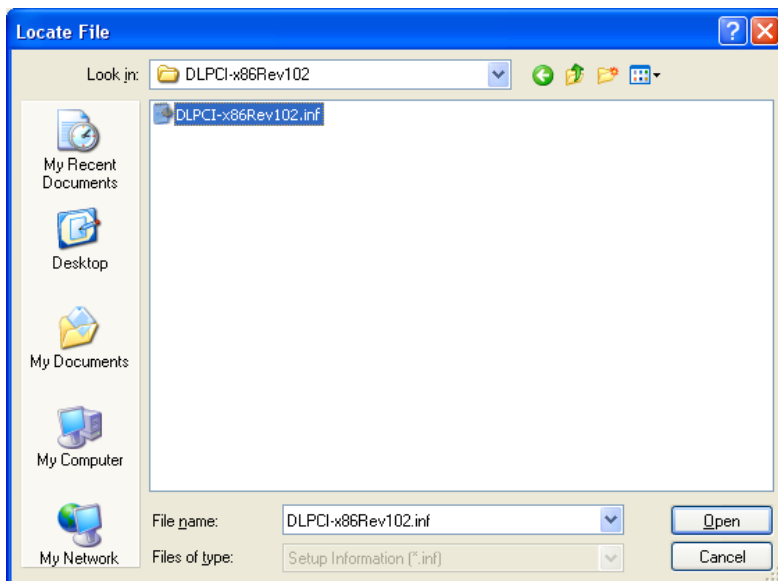
Here you click on Have a Disk.



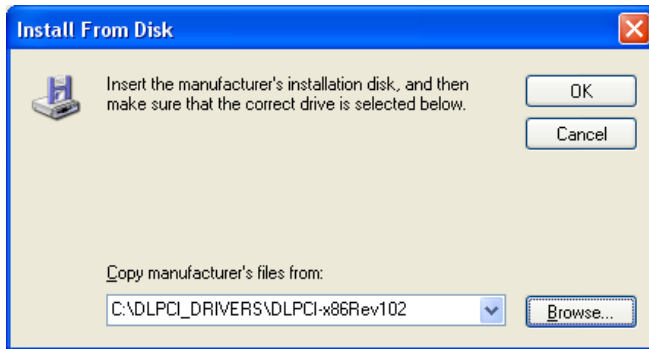
Now brows to where you have the diver saved.



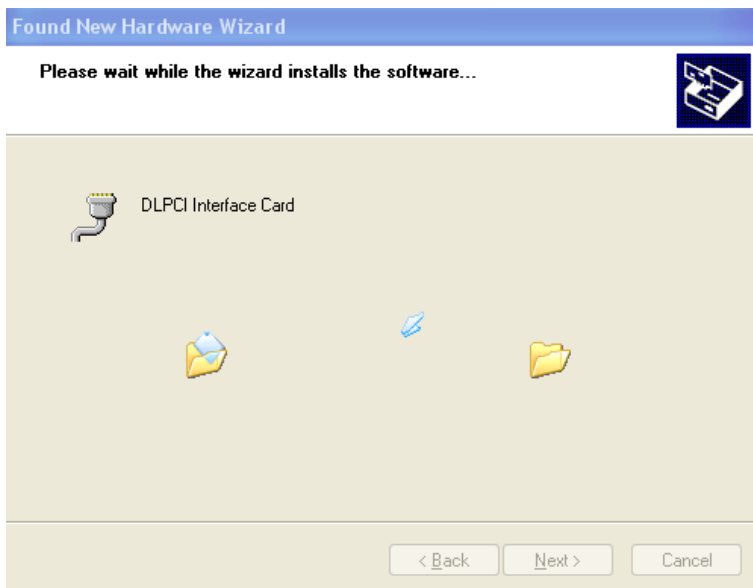
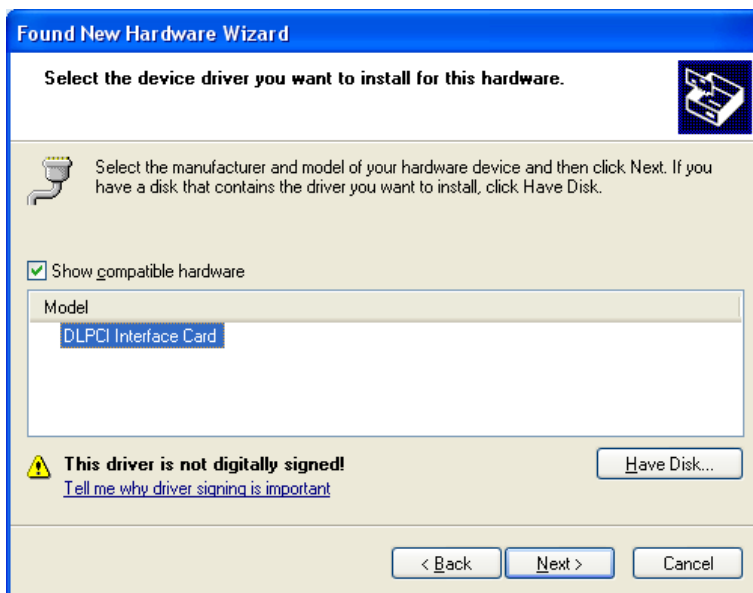
Select the latest driver as shown below.



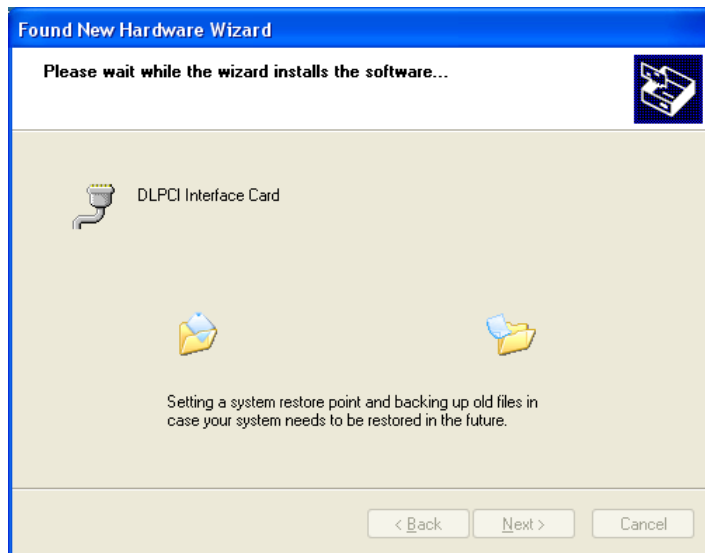
Here click on OK



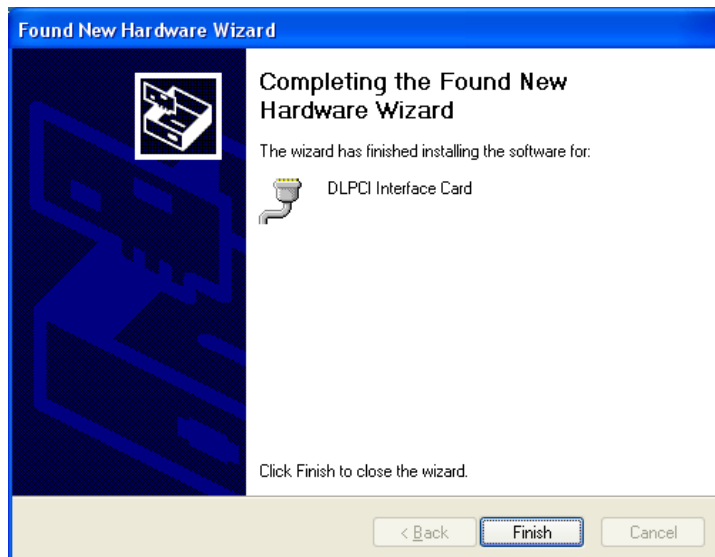
You will see under Model the DLPCI Interface Card click on it to highlight it then click on Next.



Click on Continue Anyway

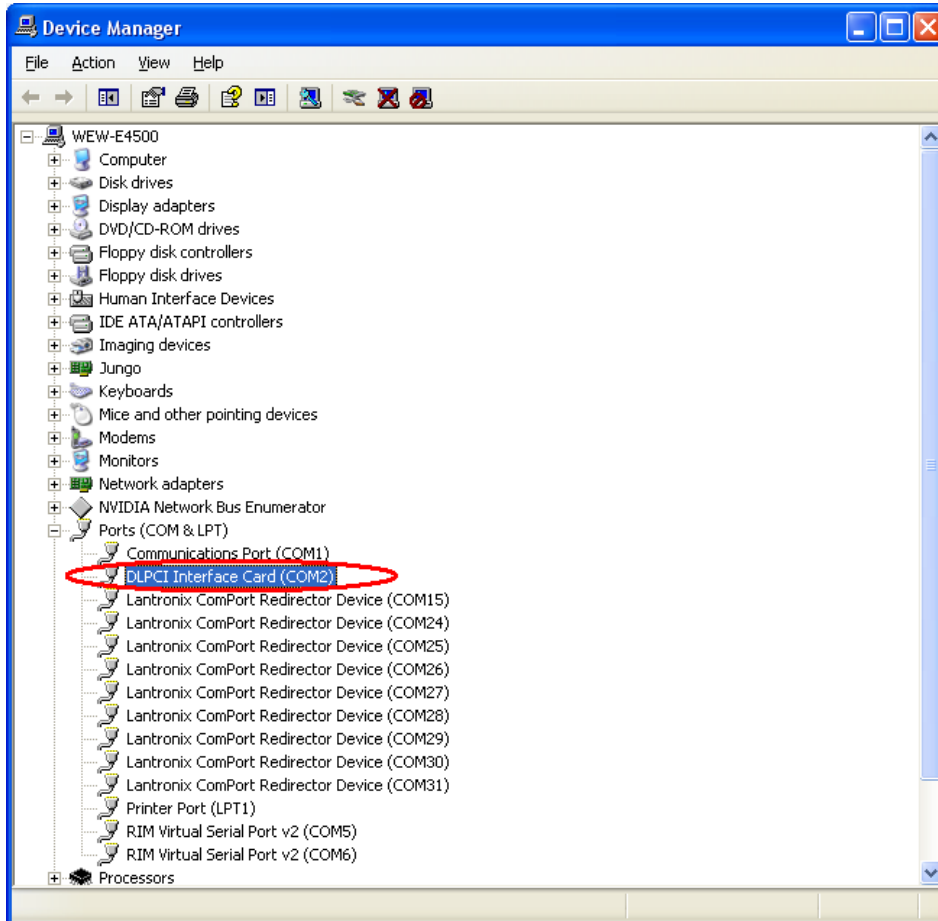


Click on finish.



In the Device manager, check the comport number for the DLCPI and remember it to use in configuring the Allen Bradley DF1 driver.

You can change the port number for any comport number that is available on your PC.



Close and restart your PC.