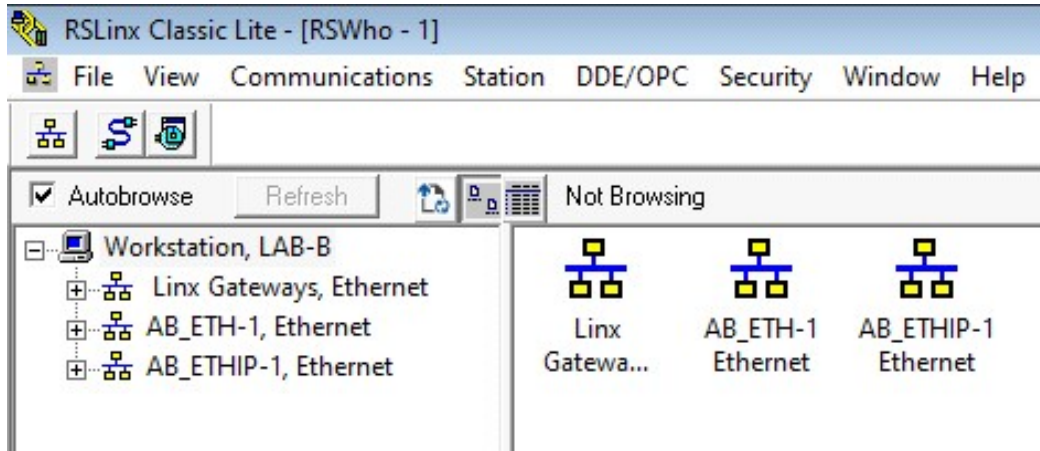
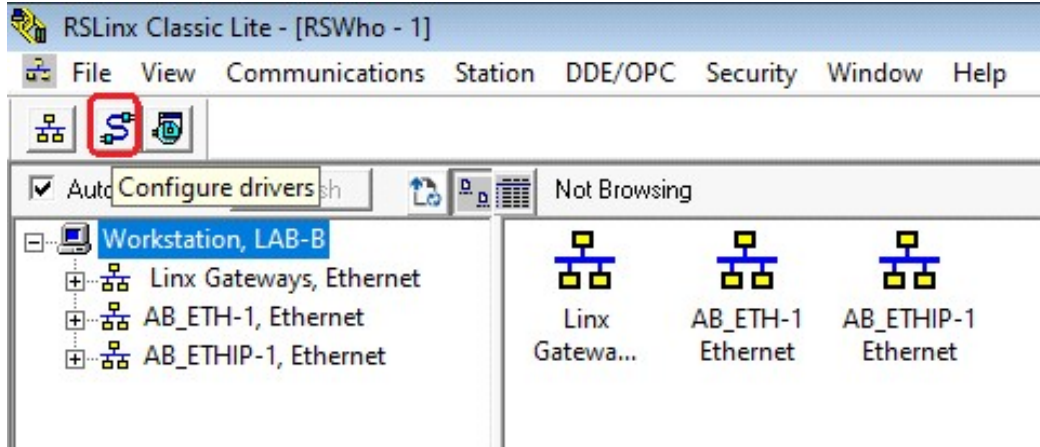


RSLINX RSLOGIX5 & RSLOGIX500 going online with PLC5&SLC504 using EQ7000

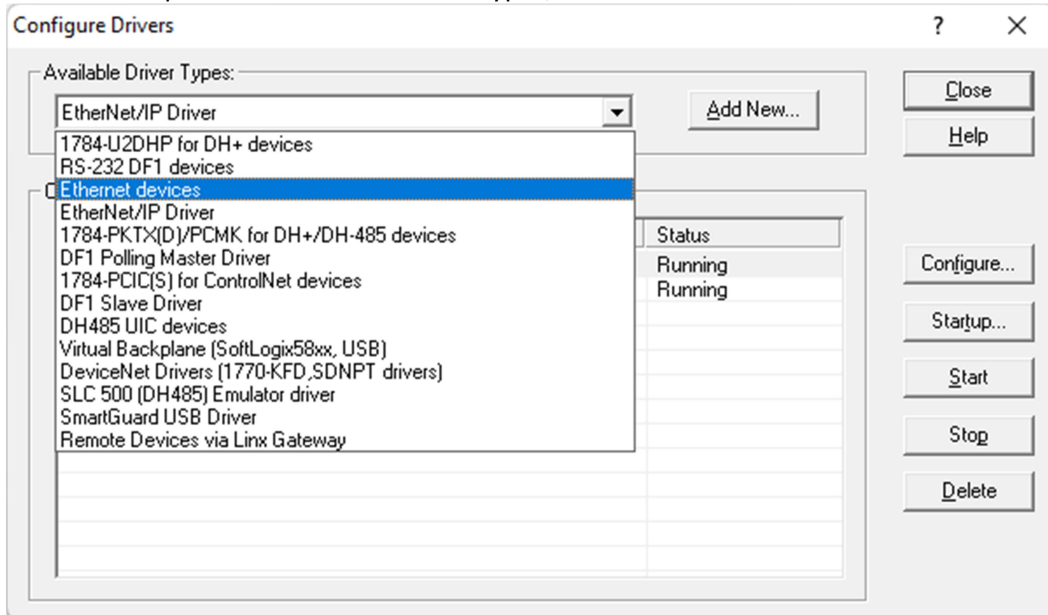
Start RSLINX



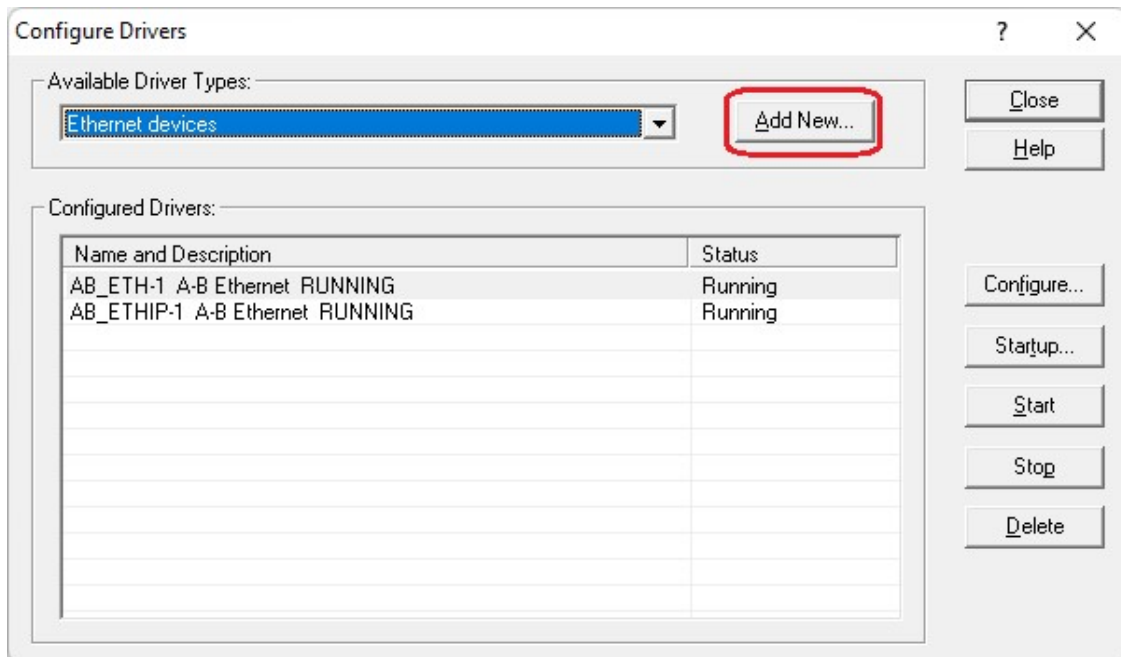
Click on Configure Drivers



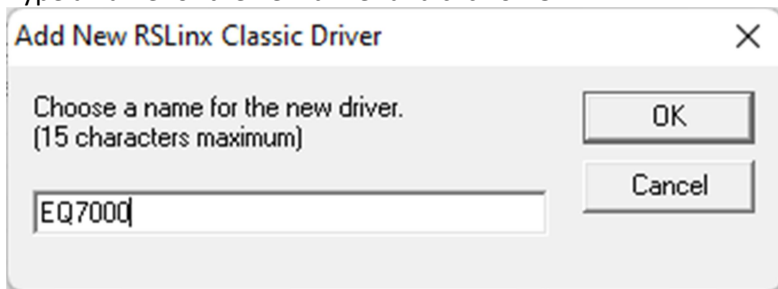
From the drop menu of available driver types, select Ethernet devices



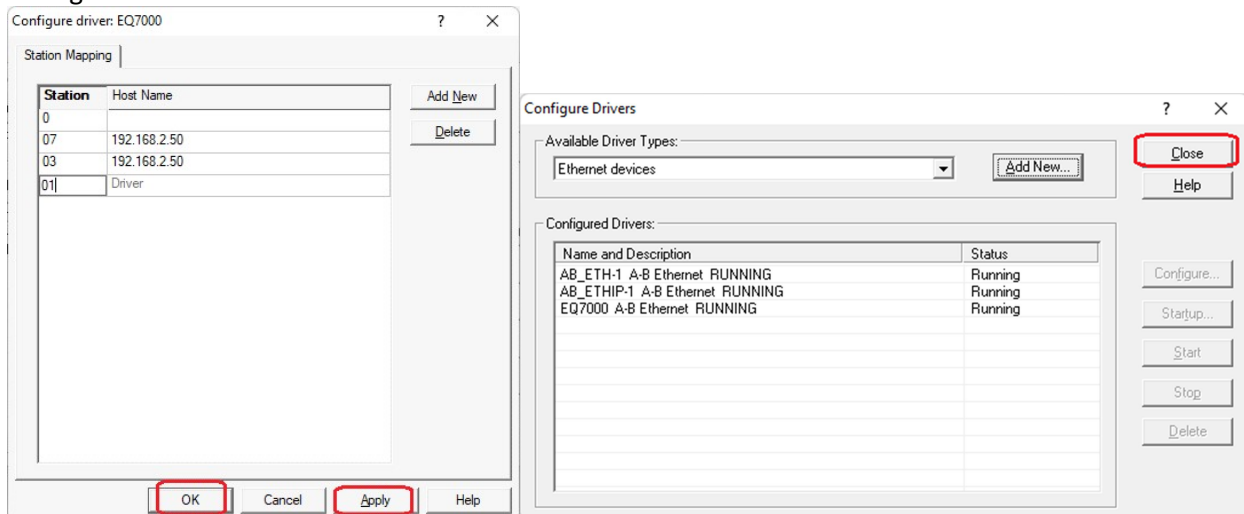
Click on Add New



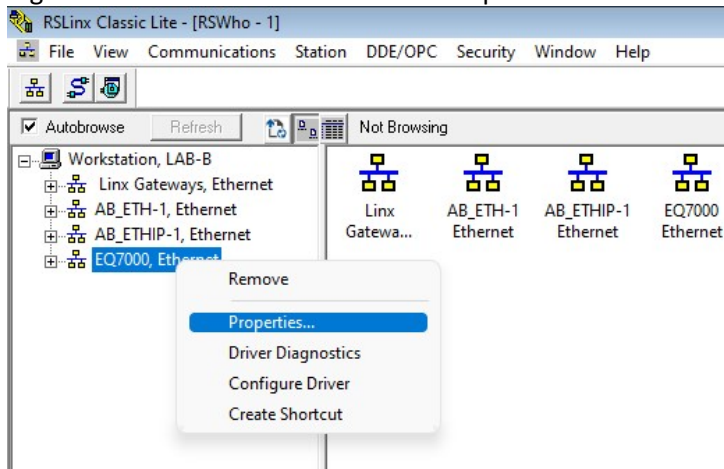
Type a name for the new driver and click on OK



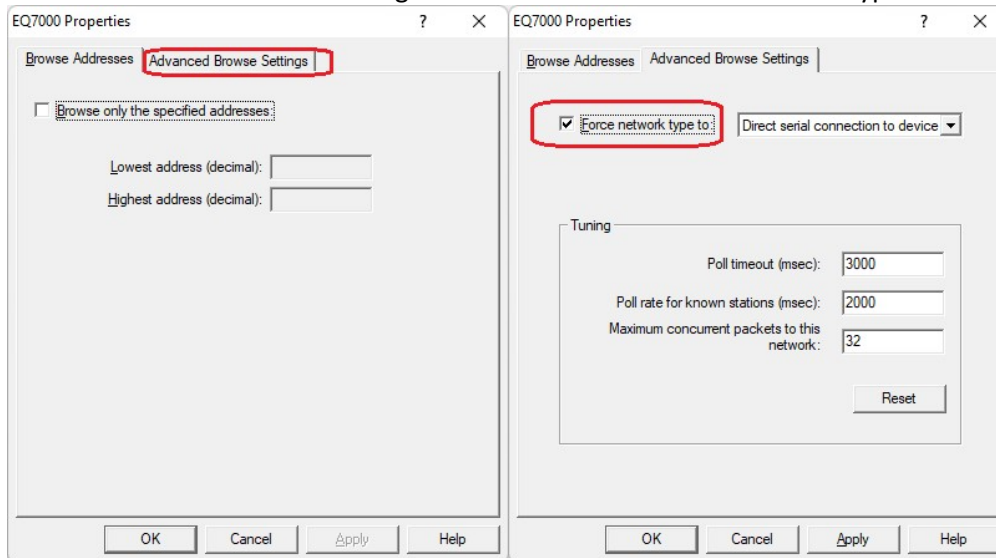
To map the node address numbers of the PLCs to the IP address of the EQ7000, type the node address numbers of the PLCs under station (in Decimal not Octal) and the IP address of the EQ7000 under host name, as of the Driver, type the node address number of the EQ7000 click on Apply and Ok ,then close Configure Drivers Window



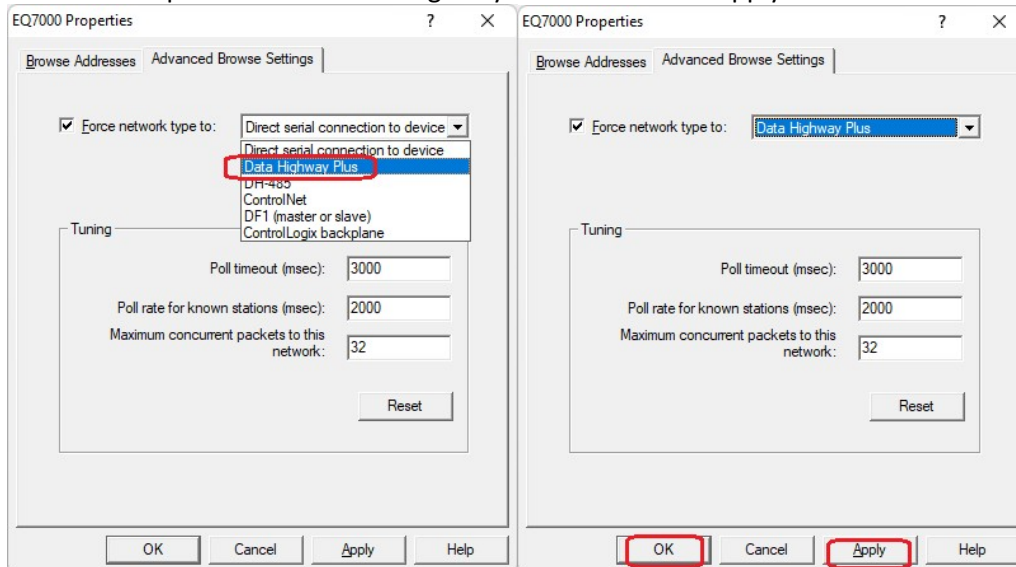
Right click on the driver and click on Properties



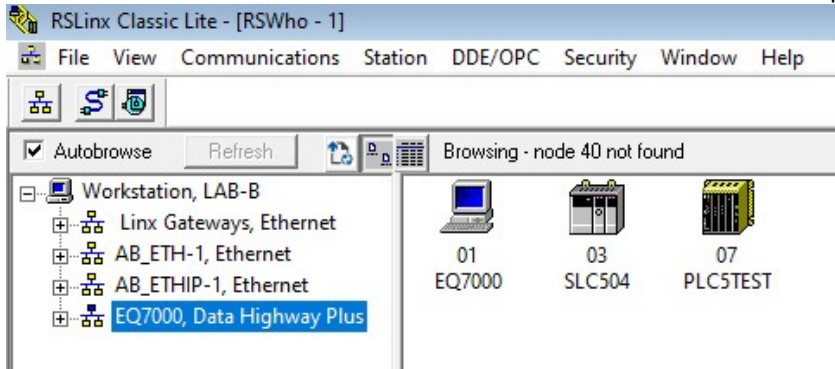
Click on Advanced Browse Settings tab and check mark Force Network type to



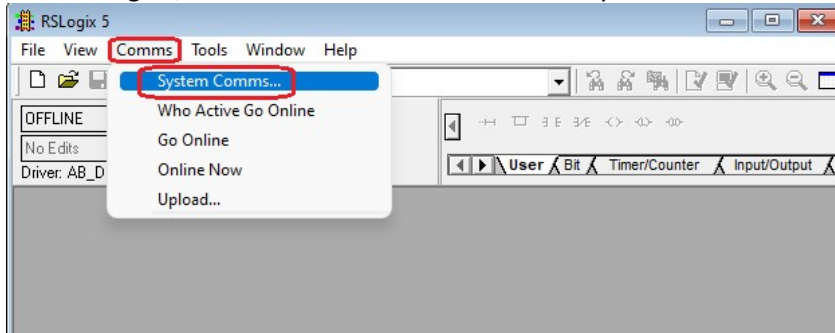
From the Drop menu select Data Highway Plus and click on Apply then Ok.



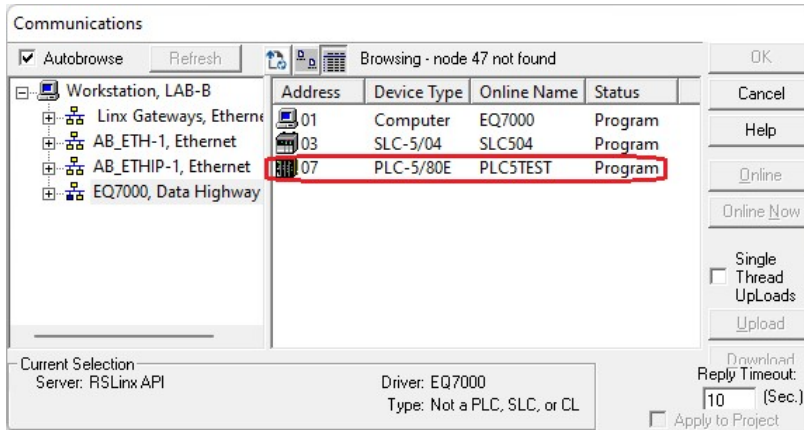
In RSWho check mark Autobrowse to see the two PLCs that were mapped, PLC 5 and SLC504



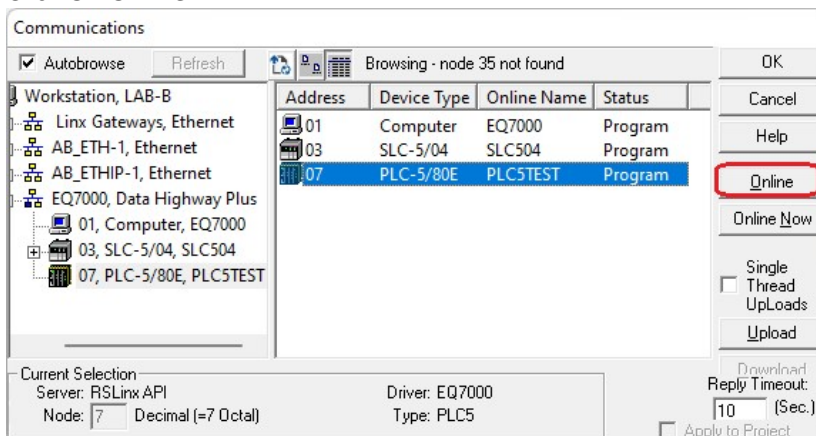
Start RSLogix5, then from under Comms click on System comms...

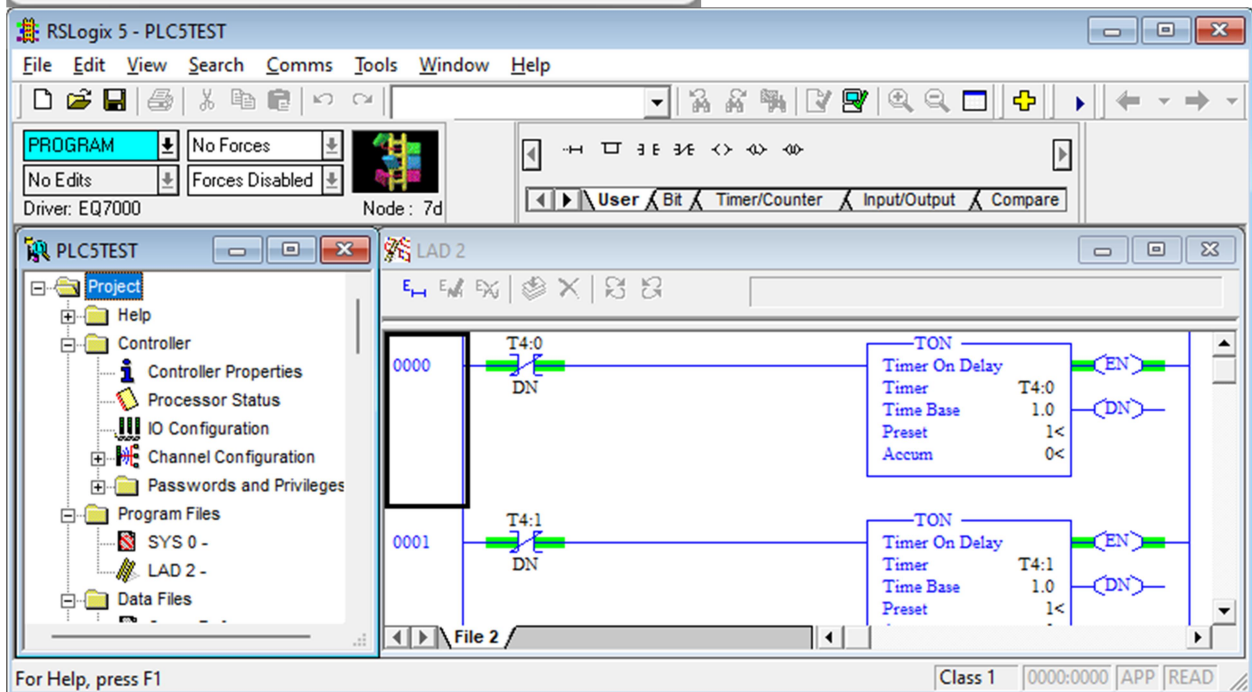
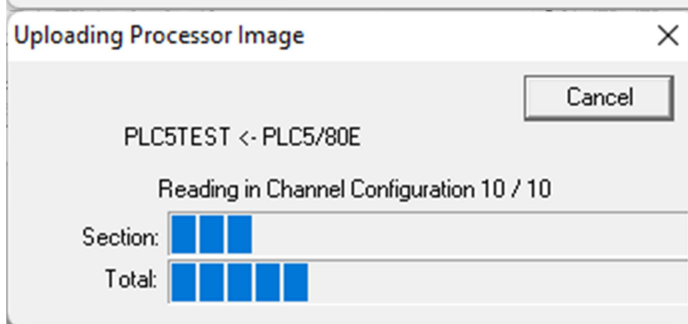
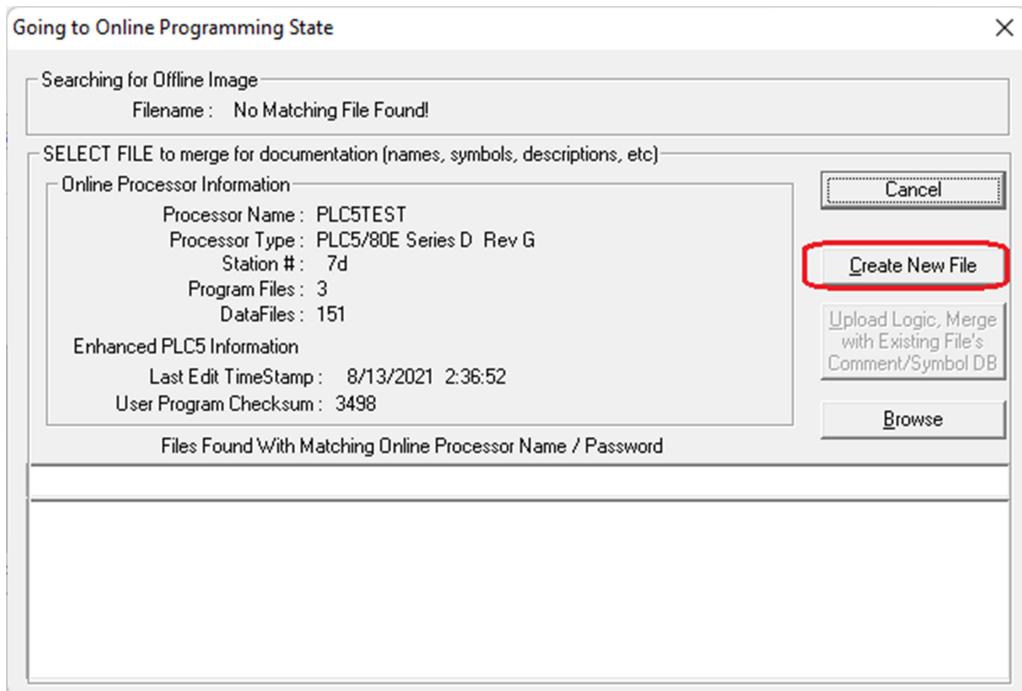


Click on PLC 5 node 7

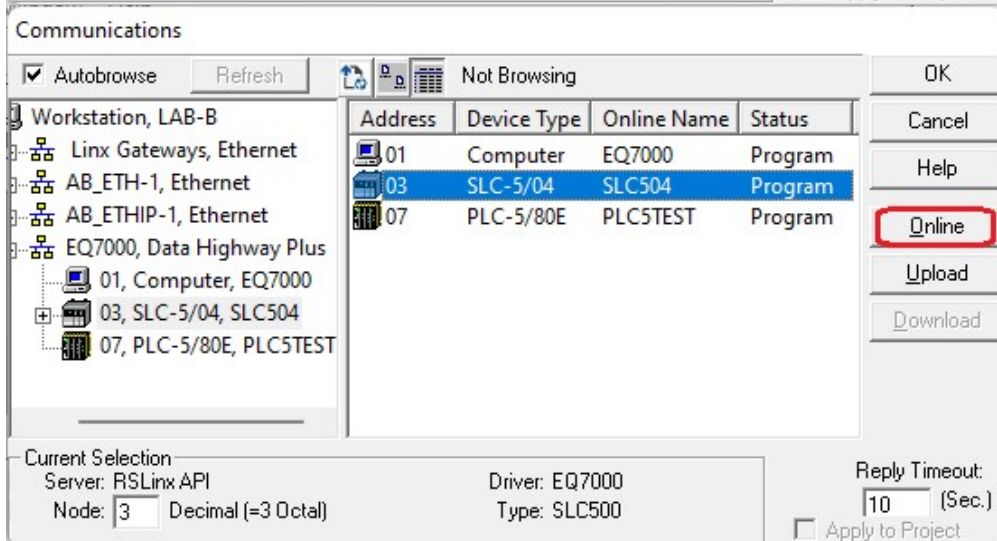
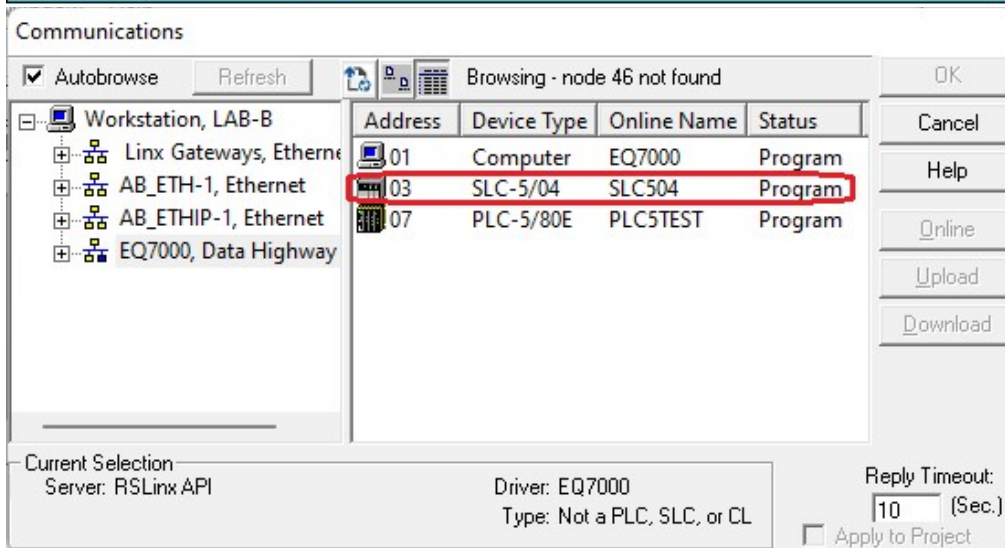
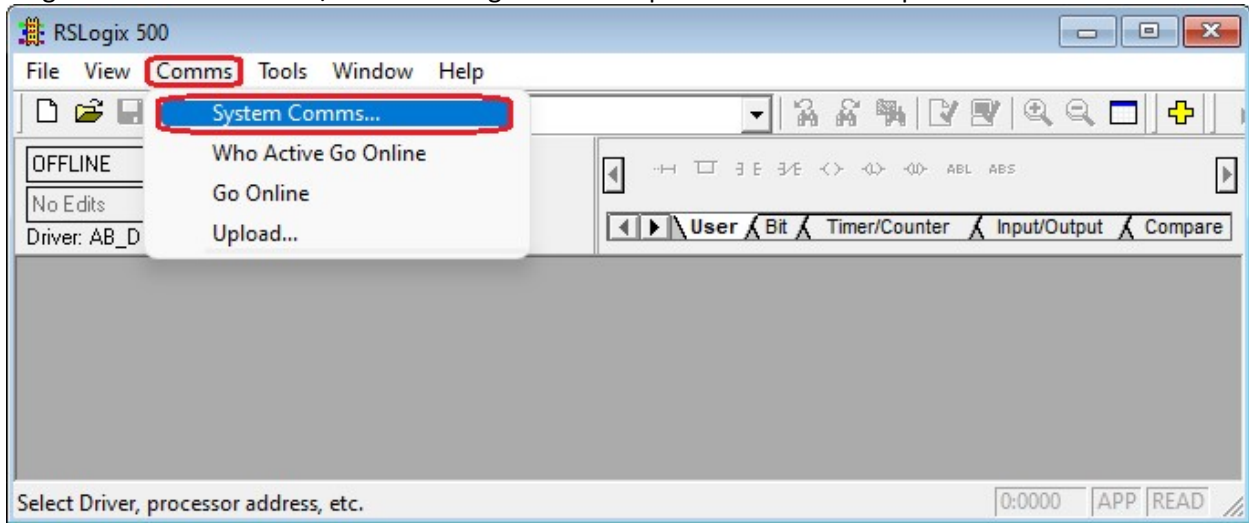


Click On Online





To go online with the SLC5/04 start RSLogix500 and repeat same similar steps done above for PLC5



Going to Online Programming State

Searching for Offline Image
Filename: No Matching File Found

SELECT FILE to merge for documentation (names, symbols, descriptions, etc)

Online Processor Information
Processor Name: SLC504
Processor Type: 1747-L541 5/04 CPU - 16K Mem. 05401
Station #: (3 Dec)
Program Checksum: fc21

Files Found With Matching Online Processor Name / Password

Buttons: Cancel, Create New File, Upload Use File, Browse

Uploading Processor Image

Reading in Data Tables

Progress bar with 5 blue segments

Buttons: Cancel

RSLinx Classic Lite - [RSWho - 1]
File View Communications Station DDE/OPC Security Window Help

Autobrowse Refresh Browsing - node 63 not found

Workstation, LAB-B

- Linx Gateways, Ethernet
- AB_ETH-1, Ethernet
- AB_ETHIP-1, Ethernet
- EQ7000, Data Highway Plus

01 EQ7000 03 SLC504 07 PLC5TEST

RSLogix 5 - PLC5TEST

File Edit View Search Comms Tools Window Help

PROGRAM No Forces No Edits Forces Disabled

Driver: EQ7000 Node: 7d

User Bit Timer/Counter Input/Output Compar

PLC5TEST

Project: Help, Controller, Controller Properties, Processor Status, IO Configuration, Channel Configuration

LAD 2

0002 T4:0 CTU Count Up

Class 1 2:0000 APP

RSLogix 500 - SLC504

File Edit View Search Comms Tools Window Help

PROGRAM No Forces No Edits Forces Disabled

Driver: EQ7000 Node: 3d

User Bit Timer/Counter Input/Output Compare

SLC504

Project: Help, Controller, Controller Properties, Processor Status, IO Configuration

LAD 2

0001 DN Count Up Counter C5:0 Praset 2001< Accum 1998<