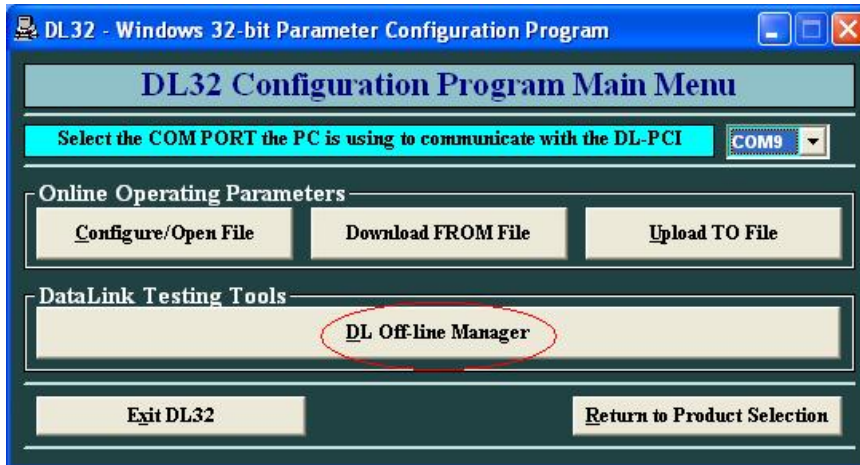
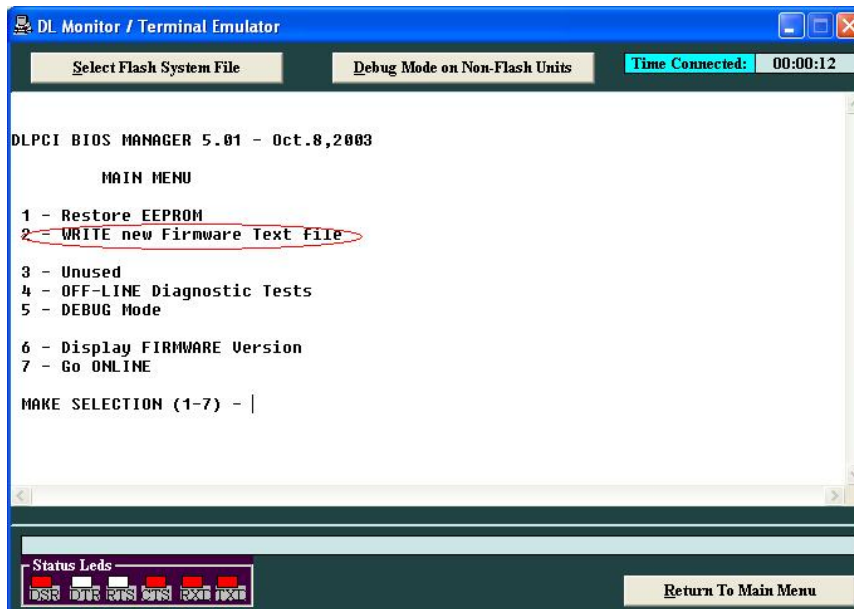


DLPCI card Firmware Update

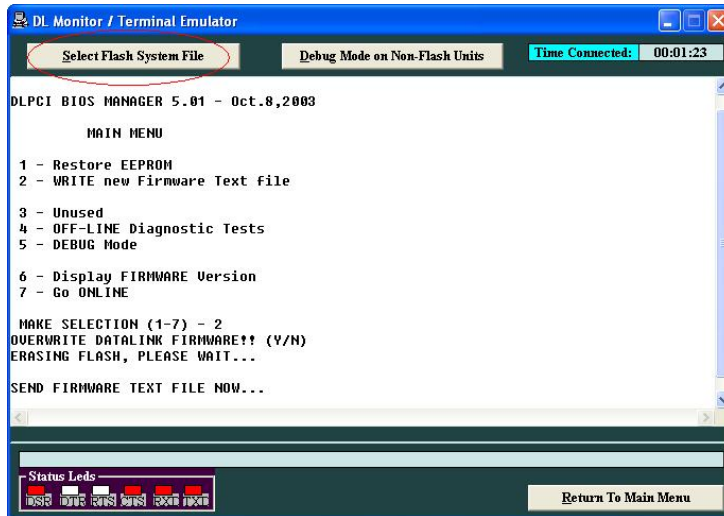
- Start the DL32 configuration software.
- Select the DLPCI product the ComPort the DLPCI is occupying in your PC.
- Click on DL Offline Manager as shown



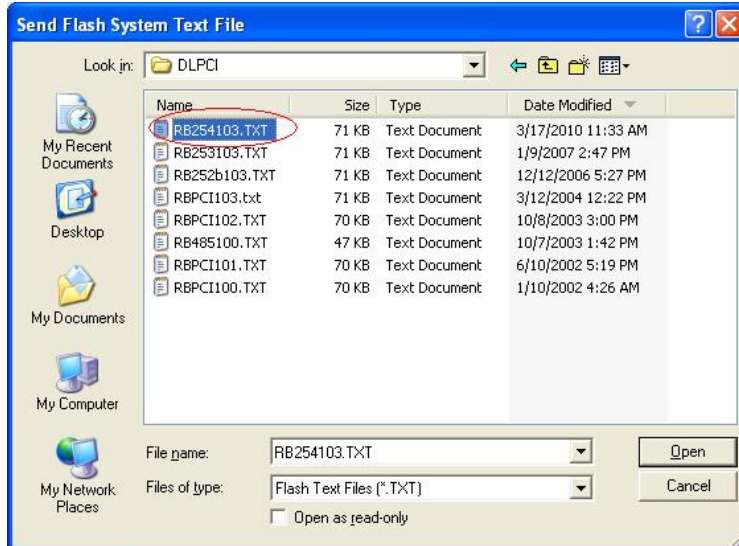
- Select option 2 to write new firmware.



- Type Y for confirming writing new firmware.
- Click on Select Flash System File



- Select the new file after unzipped to TXT.



- Wait until you see Firmware Burn A OK
- Type 6 to see the new firmware version is

DL Monitor / Terminal Emulator

Select Flash System File Debug Mode on Non-Flash Units Time Connected: 00:07:00

4 - OFF-LINE Diagnostic Tests
5 - DEBUG Mode

6 - Display FIRMWARE Version
7 - Go ONLINE

MAKE SELECTION (1-7) - 2
OVERWRITE DATALINK FIRMWARE!! (Y/N)
ERASING FLASH, PLEASE WAIT...

SEND FIRMWARE TEXT FILE NOW...

FIRMWARE BURN A-OK!

MAKE SELECTION (1-7) - 6

DL-PCI MODEL : -DH+/RIO PCI MMI/HMI- V2.54-Mar.17/10
SYSTEM VER: Rev 1.03-Mar11/04

MAKE SELECTION (1-7) -

Transfer Successful!! NOTE!!! If no A-OK appears in 15 secs, Hit <CR> to get A-OK in Monitor Screen!!

Status Leds

INSR	INVR	ERRS	CRUS	EXOR	TRXN
------	------	------	------	------	------

Return To Main Menu